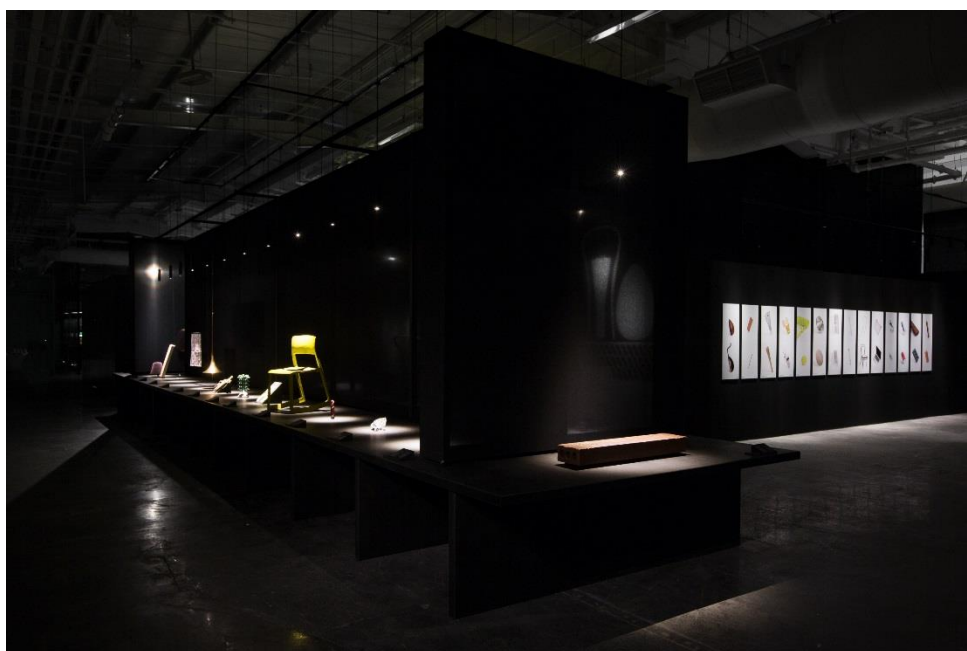
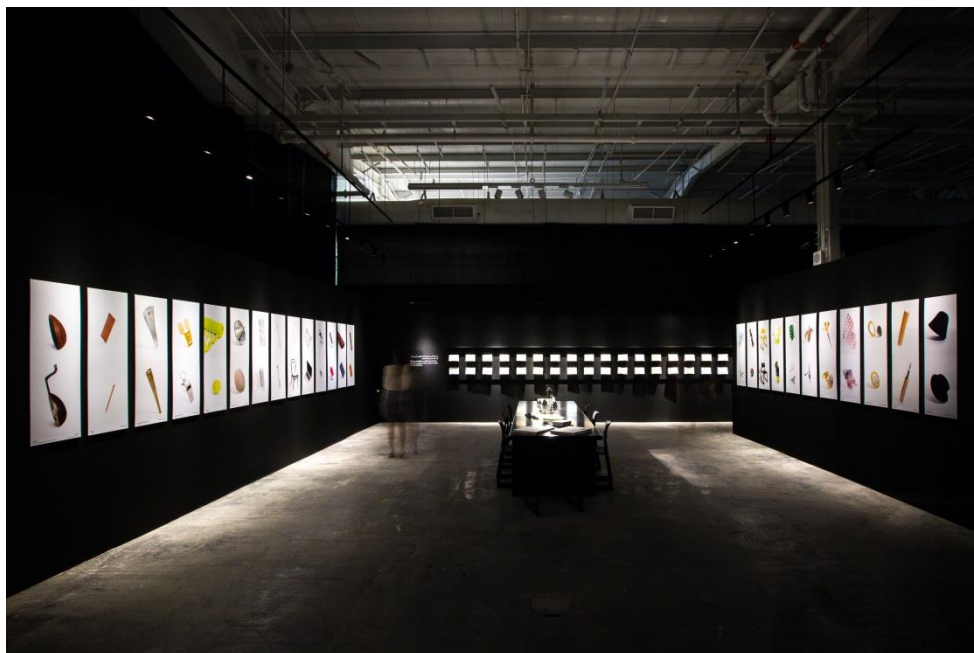


In the Making

Tour proposal



EXHIBITION VIEWS, WAREHOUSE 421, ABU DHABI.



Contents

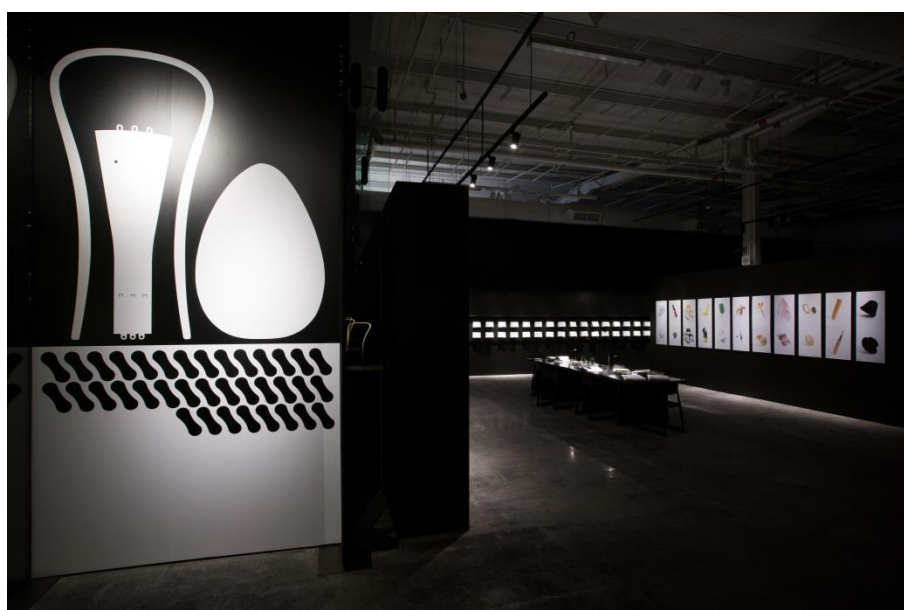
About	5
Exhibition overview	6
Exhibition details	8
Terms and conditions	9
Contacts	10

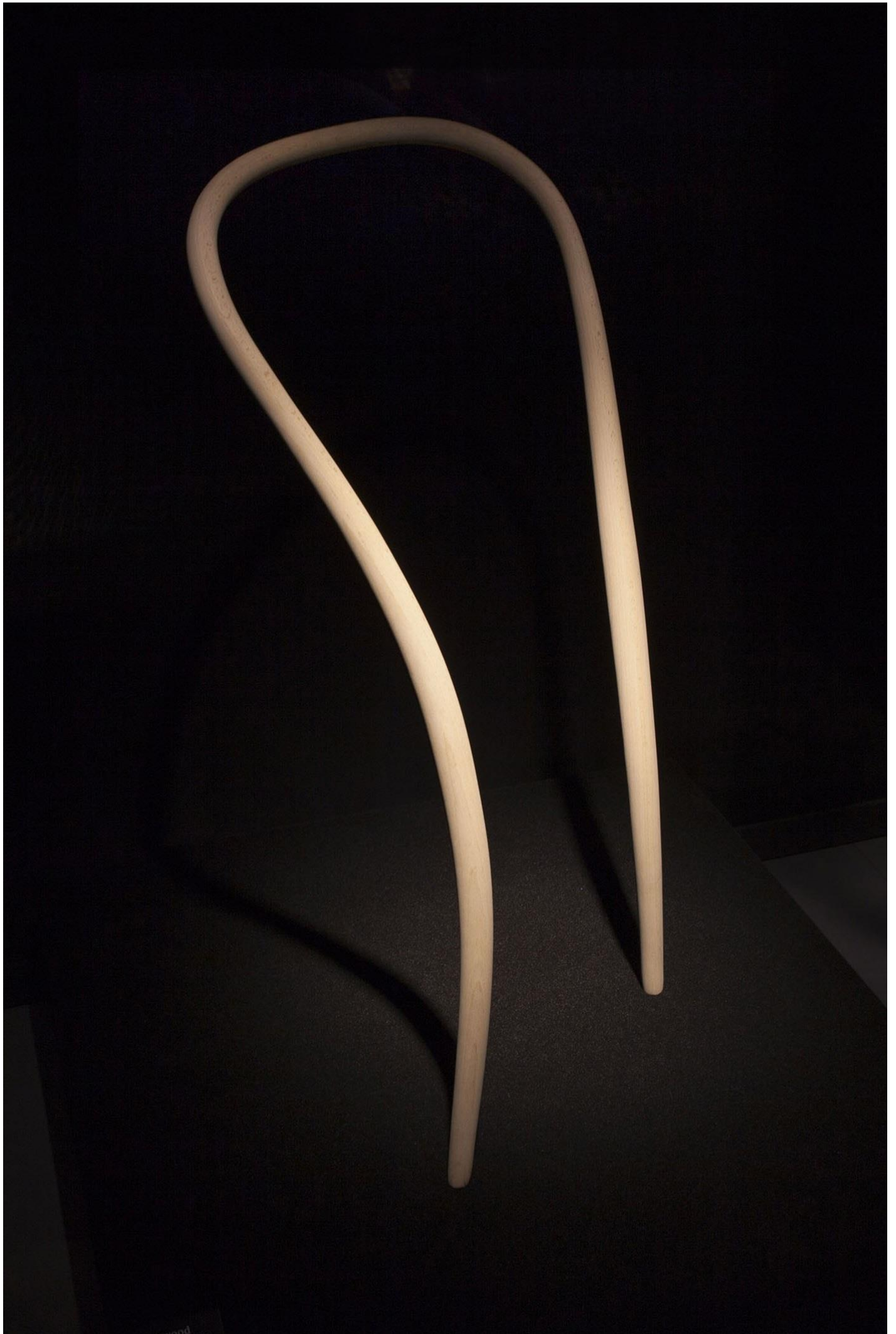
The Design Museum Touring Programme

The Design Museum Touring Exhibitions Programme was set up in 2002 with an aim to bring design exhibitions to audiences around the UK and internationally. Since then, the Museum has toured more than 120 exhibitions to 99 venues in 27 countries worldwide.

In May 2018, The Design Museum was awarded the title of European Museum of the Year and commended by the panel for its effort in developing ‘an important democratic and multi-layered intercultural dialogue, with a significant social impact in the community’.

The Design Museum touring exhibitions range in size from 150 to 1000 square metres and cover all areas of design – architecture, fashion, furniture, graphics, product, and more.





About Barber & Osgerby

Internationally acclaimed designers Edward Barber and Jay Osgerby founded their London-based studio in 1996. Their diverse body of work spans industrial design, furniture, lighting and site-specific installations as well as limited edition pieces and public commissions such as the London 2012 Olympic Torch and a £2 coin designed for the Royal Mint. They are currently working with many manufactures including Knoll, Vitra, B&B Italia, Cappellini, Venini and Flos. Their work is held in permanent museum collections around the world including V&A and Design Museum in London, Metropolitan Museum of Art, New York and Art Institute of Chicago. In 2001, Barber and Osgerby established architecture and interior design practice Universal Design Studio and in 2012 they founded Map, specialising in research and strategy-led design. In 2013 they were awarded an OBE for their services to the design industry.



Exhibition overview

Curated for the Design Museum by Edward Barber and Jay Osgerby, *In the Making* captures objects mid-manufacture and puts the aesthetic of the unfinished centre stage. Varying from the £2 coin to a tennis ball, a surprising range of objects have been chosen by Barber and Osgerby to be exhibited in an unfinished state, celebrating the intriguing beauty of the making process and revealing the unexpected quality that everyday objects have before assuming their final, recognisable form.

The show gives a glimpse of the designers' ongoing dialogue with manufacturing that is so distinctive to their practice. Throughout their careers, Edward and Jay have had a technical curiosity and fascination with the making process. The way in which things are created has had a profound influence on them and continually inspires their work. 'We have always been fascinated by the making process as it is an integral part of our work. We have curated an exhibition that will provide a platform to capture and reveal a frozen moment in the manufacturing process and unveil an everyday object in its unfinished state. Often the object is as beautiful, if not more so, than the finished product!'

These partially made objects give an insight into the design thinking that has driven this duo to such acclaimed success, including designing the London 2012 Olympic Torch, which went on to be awarded the Design Museum's Design of the Year 2012. Their multidisciplinary approach challenges the boundaries of industrial design, architecture and art.

There is an option for tour venues to work with Edward Barber & Jay Osgerby to curate locally made exhibits for their venue.



“It speaks directly to my seven-year old self, and I expect a million others too, of every age.”

“All that makes this an exhibition which showcases Barber & Osgerby’s skills as designers better than any retrospective. Their zeal for making, and understanding of process and material is what enables them to explore and create things of outstanding value and utilitarianism on the one hand, and serene beauty on the other.”

The Telegraph

“The idea makes for a very curious but wonderfully engaging exhibition of half finished objects, some of which, in their incomplete state, look seductively sculptural, abstract, occasionally deceptive and counterintuitive and occasionally, utterly beautiful.”

“This is a design show of rare modesty, almost the opposite of a monographic exhibition. Instead it is a pure celebration of making and the designers’ pure pleasure in process shines through.”

Financial Times

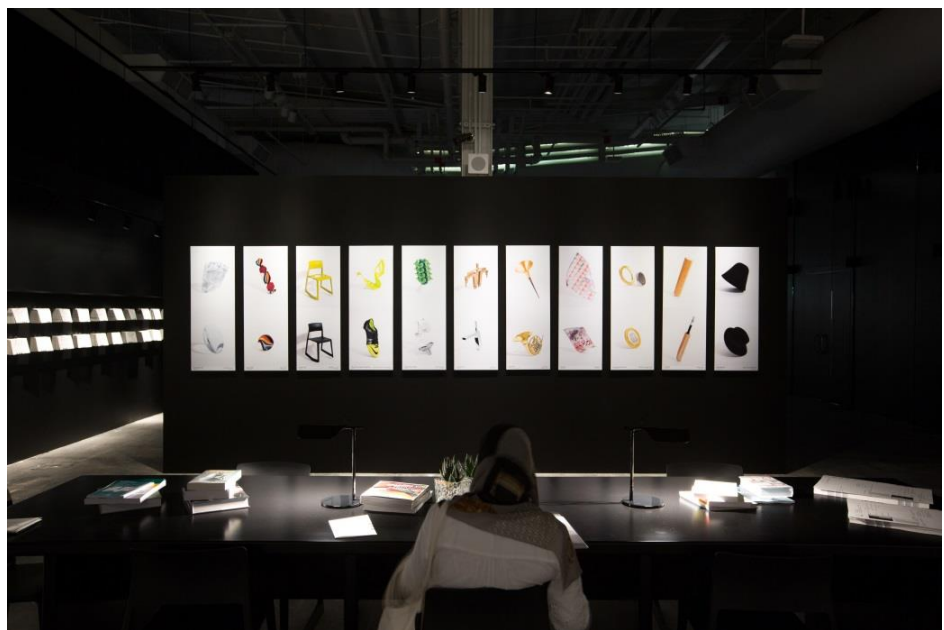
“In The Making offers an insight – albeit a carefully curated one – into the realm of manufacturing, hopefully helping to inspire a new generation of designers to take up the torch.”

“What do we learn from this handsome little show? Mostly, I think, despite being asked to admire an ugly lump of aluminium destined to become a MacBook Pro, that it is the old processes and materials that still hold the greatest allure.”

Evening Standard

Exhibition details

Design Museum curator:	Margaret Cabbage
Exhibition design:	Universal Design Studio
Exhibition graphics:	Build
Venues:	Design Museum, London: 22 Jan – 4 May 14 Irish Design 2015 at Dublin Castle, 29 Dec 14 – 17 Mar 15 The Wilson, UK, 11 Jul – 20 Sep 2015 Warehouse421, Abu Dhabi, Nov 17 - Feb 18
Available:	from spring 2019 onward
Space:	150 – 250 sq m



EXHIBITION VIEW, WAREHOUSE 421, ABU DHABI, 2017.

Terms and conditions

Hire Fee, on request:

INCLUDED IN HIRE FEE

- Concept, administration and tour management by the Design Museum
- Curation fee to Edward Barber and Jay Osgerby
- Exhibits
- Use of the DM exhibition and graphic design concept
- Artwork for English language exhibition texts and graphics
- Use of exhibition images and films, with rights cleared
- Crating for all existing exhibits and graphics
- Use of selected DM display kit to be confirmed.

COSTS PAYABLE BY THE VENUE

- Hire Fee, payable in instalments
- Fee to Exhibition Designer to adapt the exhibition to the Venue's space
- Share of transport costs
- Storage of empty crates
- Insurance
- Installation and de-installation costs, including build, technicians, couriers and any additional staff required on site
- Provision, installation and maintenance of AV kit
- Translation and production of exhibition graphics, fee to graphic designer
- Publicity costs, press or printed material such as private view invitation, flyer, poster, advertising
- Any other cost relating to exhibition production.



GLASS MARBLE AND CRYSTAL GLASS. DESIGN MUSEUM, LONDON, 2014. PHOTO BY MIRREN ROSIE.

Contact

To find out more about this exhibition and tours available from 2017 when the Design Museum moves to its new home in Kensington, please contact:

Charlotte Bulté

Touring Manager

E: Charlotte.Bulte@designmuseum.org

T: 00 44 (0) 20 3862 5883