



Easter Packaging Design Challenge

Design and construct the Easter lamb created by the packaging team at the Alexir Partnership.

1. Choose one of the 2D-to-3D nets below.
2. Make any extra folds or apertures if you want to.
3. Colour and pattern it to be as eye-catching as possible.

What you will need:



Printer



Scissors



Glue



Paper



Colour Pencils

Easter Lamb carton with “envelope lock base”

Question:

What is an envelope lock base?

Answer:


This carton has an envelope base that locks it together at the bottom. It is very easy to make and does not need any glue or tape.


How to make:


You can choose whether you want to create your own design or colour in the one that has already been drawn for you.

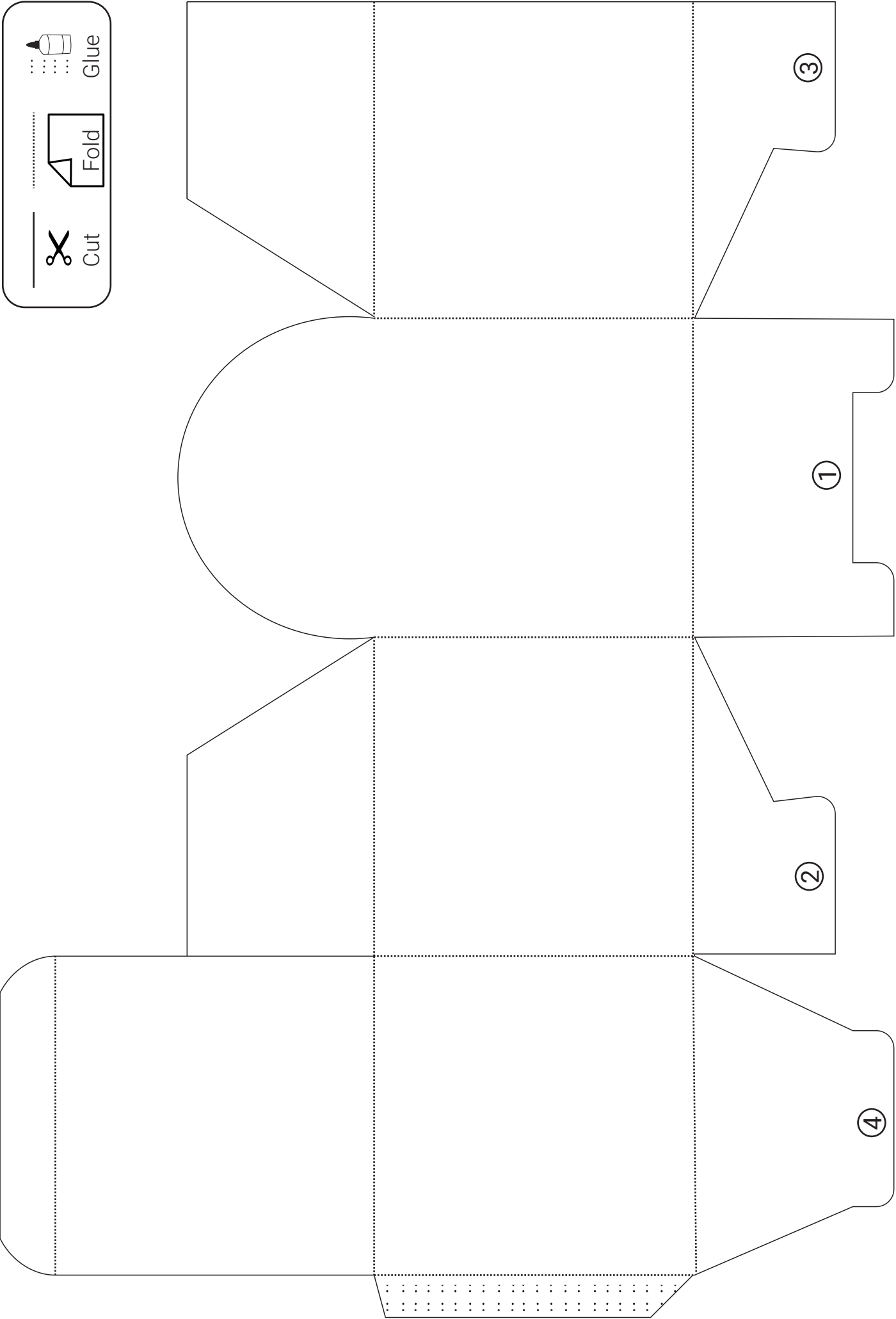
1. Fold over flap no. 1.
2. Next fold over the two smaller flaps no.2 and no.3.
3. Finally fold over flap no.4 and ‘click’ in.




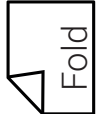

Cut

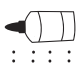

Fold


Glue



Cut

Fold

Glue

