



# **event spaces**

**at the spectacular new Design Museum  
in Kensington**

# contents

overview	5
capacities and settings	7
spaces: the Bakala auditorium	8
spaces: the Helene and Johannes Huth Gallery	9
floorplan: the Helene and Johannes Huth Gallery	11
spaces: the atrium	12
food and drink	13
unique offer	14
location and contact	15





## overview

The new Design Museum in Kensington, which opened on 24 November 2016, is the world's leading museum devoted to architecture and design. It's an international showcase for the many design skills at which Britain excels, a creative centre and a marketplace for new ideas. A cultural landmark, it will nurture and inspire the next generation of design talent.

Located on Kensington High Street with beautiful views over Holland Park, this stunningly refurbished building is available for conferences, awards ceremonies, dinners, drinks receptions and meetings.

The new home is housed within a Grade II\* listed building, which was remodelled by John Pawson. The move gives the museum three times more space than in its previous location at Shad Thames. It offers three galleries and state-of-the-art learning and event spaces under its stunning roof in Holland Park. For the first time in the museum's history there is a free gallery presenting a contemporary vision of the designed world through the museum's collection.

The museum is an independent registered charity governed by a board of trustees. By hosting your event at the Design Museum you are contributing to our vision of helping everyone understand the value of design.

[designmuseum.org](http://designmuseum.org)  
[#newdesignmuseum](https://twitter.com/newdesignmuseum)



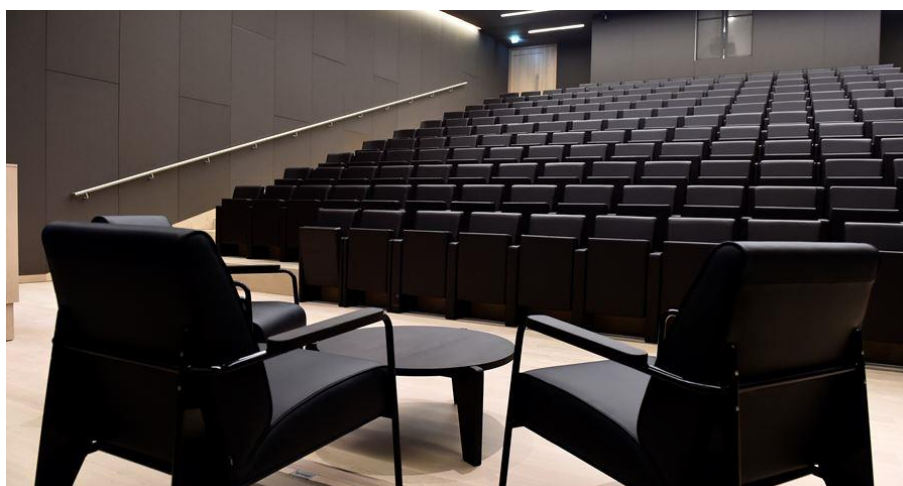


## capacities and settings

Room	Size (sqm)	Dinner	Standing	Theatre	Classroom
the Bakala auditorium	460	n/a	n/a	202 plus 6 wheelchair spaces	n/a
the Helene and Johannes Huth Gallery	319	200	220	200	70
the atrium	314	100	270	n/a	n/a



## spaces: the Bakala auditorium



The Bakala auditorium is a 200 seat theatre style space with state-of-the-art AV facilities. It is the ideal space for screenings, conferences, product launches, lectures and award ceremonies.

The Bakala auditorium features:

- capacity for 202 seated plus 6 wheelchair spaces
- fixed, raked seating for 200 people
- fixed technical control position for HD projector
- 4.7m x 2.65m (16:9) screen
- surround sound PA system
- wireless presentation options
- availability to combine with the atrium for evening drinks receptions
- availability to combine with the film studio for interviews.

Room	Size (sqm)	Dinner	Standing	Theatre	Classroom
the Bakala auditorium	460	n/a	n/a	202 plus 6 wheelchair spaces	n/a



## spaces: the Helene and Johannes Huth Gallery



The Helene and Johannes Huth Gallery is located on the second floor of the museum with views over Holland Park. It's a versatile event space offering you the opportunity to host product launches, business meetings and conferences, receptions and banquets and pop-up exhibitions. This space also opens out onto the Designer Maker User exhibition.

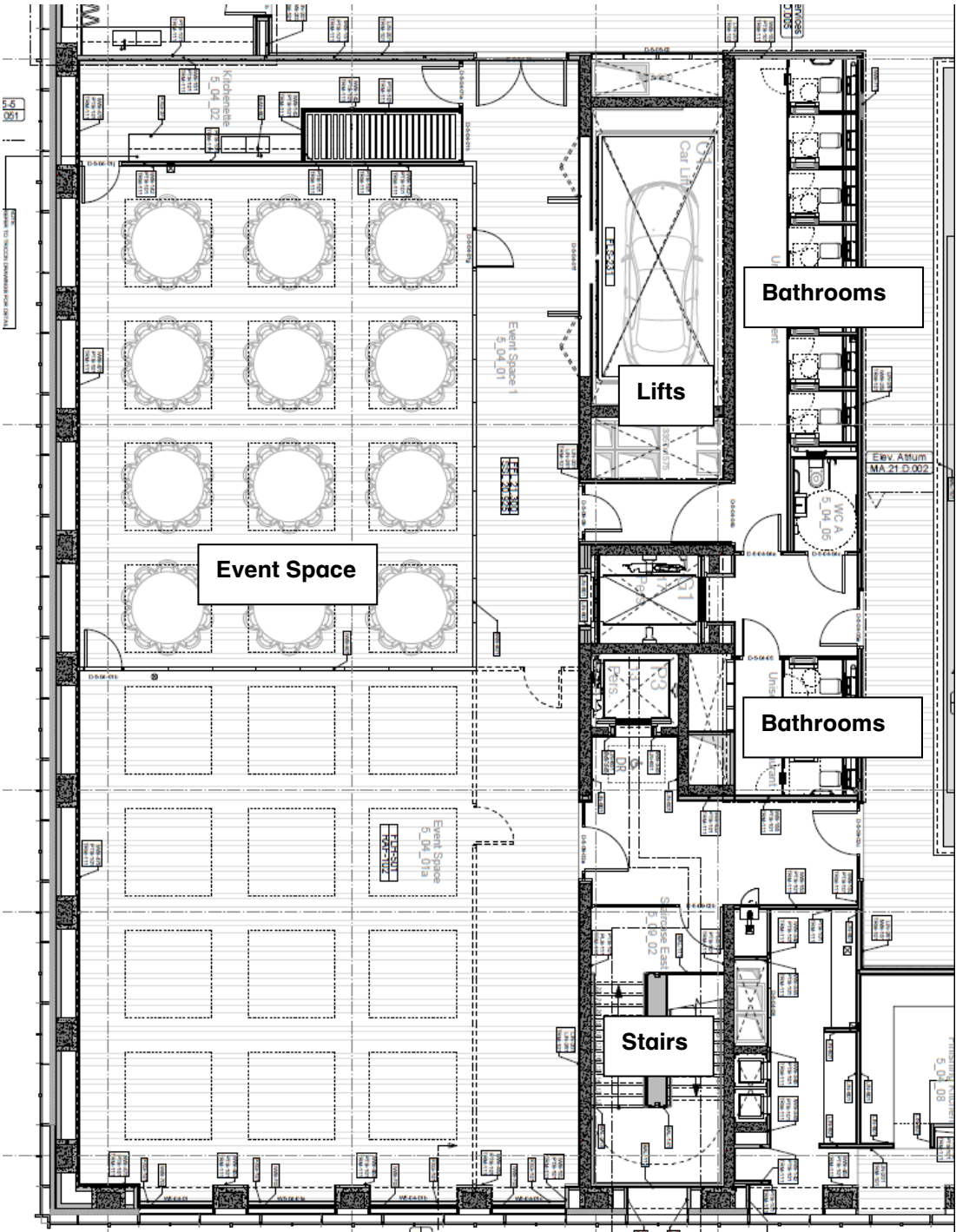
The Helene and Johannes Huth Gallery features:

- 319 sqm of space, with a retractable wall system which allows the room to be divided into two sections allowing for both large and intimate events
- capacity for dining for 200 guests seated or 220 standing receptions
- state-of-the-art technical facilities including an AV and PA system and stage area
- the range of cutting edge Vitra furniture with its clean lines and ergonomically design chairs ensure will your event has a contemporary style.

## spaces: the Helene and Johannes Huth Gallery

Room	Size (sqm)	Dinner	Standing	Theatre	Classroom
the Helene and Johannes Huth Gallery	319	200	220	200	70
the Helene and Johannes Huth Gallery 1 (without corridor)	n/a	140	170	140	80
the Helene and Johannes Huth Gallery 2 (without corridor)	n/a	80	110	70	50
the Helene and Johannes Huth Gallery 1 (with corridor)	n/a	90	110	90	50
the Helene and Johannes Huth Gallery 1 (without corridor)	n/a	40	60	n/a	n/a

floorplan: the Helene and Johannes Huth  
Gallery





## spaces: the atrium



The atrium, the main entrance to the museum, provides a dramatic, triple height space with views of the stunning roof. For hire once the museum has closed to the public, the space is perfect for cocktail receptions, launches or award ceremonies.

The atrium features:

- 314 sqm of space, plus space on the mezzanine and 1st floor landing levels
- capacity for dining for 100 seated and 270 standing receptions
- state-of-the-art technical facilities
- availability to combine with the Bakala auditorium for awards ceremonies, receptions, cocktail parties and delegate registration.

Room	Size (sqm)	Dinner	Standing	Theatre	Classroom
the atrium	314	100	270	150	n/a
mezzanine	n/a	n/a	45	n/a	n/a
1 <sup>st</sup> floor balcony	n/a	n/a	70	n/a	n/a

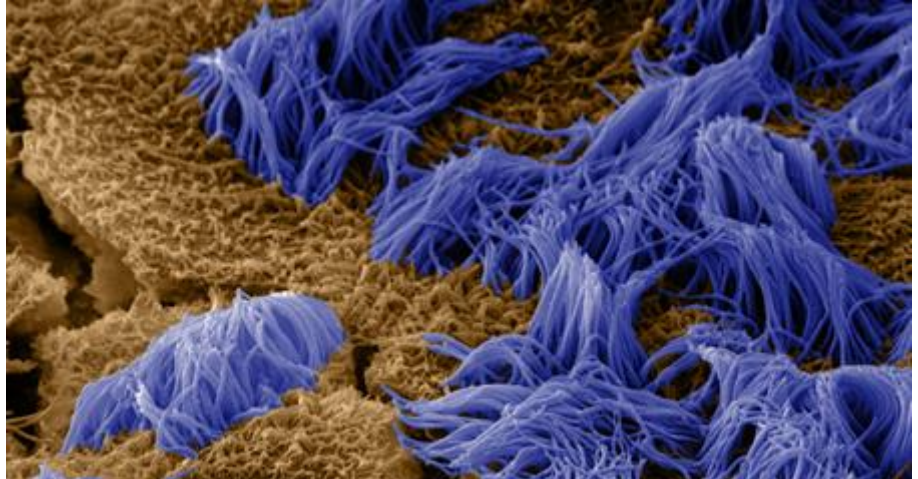
## food and drink



The new Design Museum features an exciting new bar, restaurant and café. The new restaurant partner is Prescott & Conran who operate the coffee and juice counter on the ground floor and Parabola bar, café and restaurant on Level 2. They will also be the caterer for private events hosted at the Design Museum.

Prescott & Conran owns and operates a small collection of cafés, bars, restaurants and members' clubs including Albion, Boundary, Lutyens and Les Deux Salons restaurants.

## **unique offer**



Combine your event with an exhibition visit, a guided tour or beautiful gifts from the Design Museum Shop.

### **exhibition visits**

Ensure your private event is truly memorable by combining it with exclusive access to the Design Museum's exhibitions.

Headline exhibitions take place in the ground floor gallery next to the atrium, opening with *Fear and Love: Reactions to a Complex World*, while the lower ground floor gallery hosts further exhibitions, opening with the flagship *Beazley Designs of the Year* show.

The permanent collection display, *Designer Maker User* tells the story of contemporary design through these three interconnected roles using the museum's collection. This free exhibition is located on the second floor next to the *Helene and Johannes Huth Gallery*.

### **guided tours**

Ensure your guests make the most of their exhibition visit by combining your event with a guided tour. Our expert guides will provide your group with a unique experience, from personal insight into the exhibition, to stories behind the designs and designers.

### **design gifts**

Treat your guests to tailored gift solutions from the Design Museum Shop. Select from our carefully curated edit of the best in design and beautiful books to complement your event at the Design Museum.

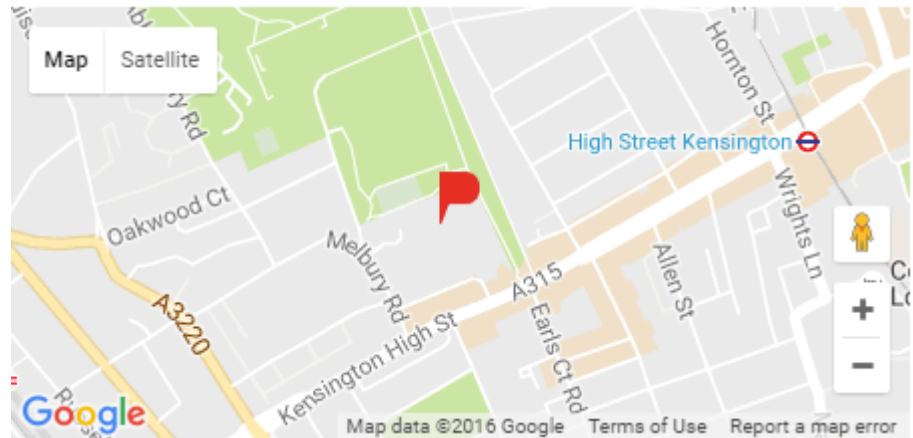


## location and contact

The new Design Museum is located on Kensington High Street with beautiful views over Holland Park in west London.

### **the new Design Museum is located at**

224-238 Kensington High Street  
London, W8 6AG



### **closest transport**

Underground: High Street Kensington, Earl's Court and Holland Park

Overground: Kensington/Olympia

### **contact**

[venuehire@designmuseum.org](mailto:venuehire@designmuseum.org)

+ 44 020 3862 5864

+ 44 020 3862 5865

